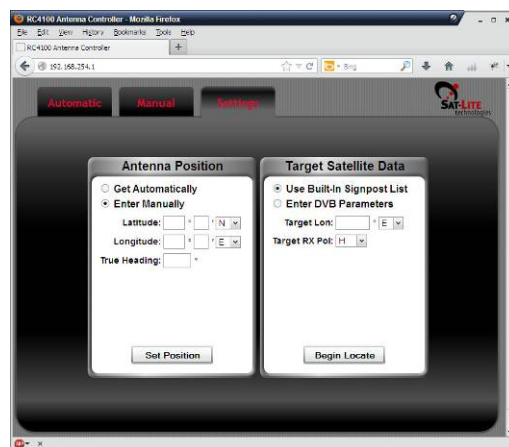
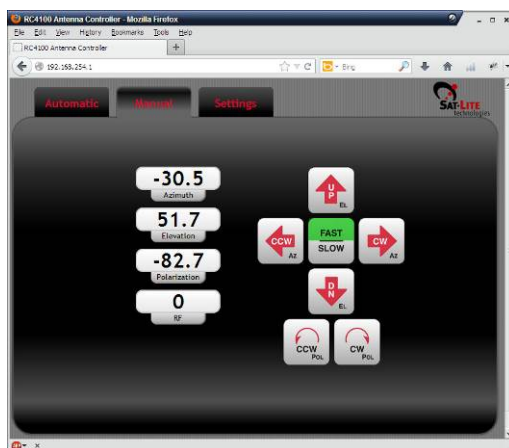
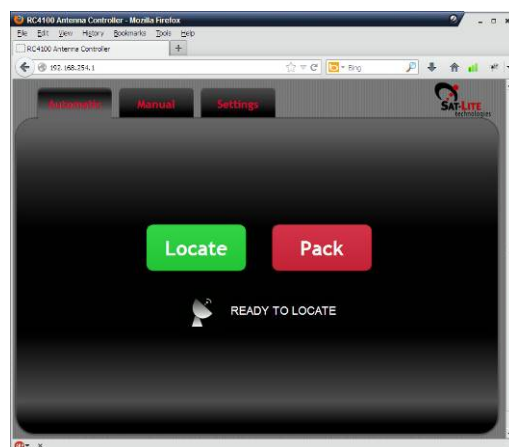


RC4100 Integrated Flyaway Controller

Sat-Lite Technologies Motorized Flyaway Antenna



- **Outdoor Mounted Antenna Controller**
- **Simple GUI Ethernet Interface**
- **Automatic Pointing Solution**
- **User Programmable DVB-S/S2 Receiver for Positive Satellite ID**
- **Fully Enclosed and Weatherized**
- **GPS / Single Axis Compass for Auto Acquisition**
- **One Button Auto Locate Features**



910 Fisher Road, Longview, TX 75604 USA
T 903-295-3400 F 903-295-3433 sales@sat-litetech.com
www.sat-litetech.com

Input Power:	100 - 240 VAC, 1 Phase, 50/60 Hz, 500 W
Temperature:	Operational: -40° to +60° C Survival: -40° to +70° C
Outdoor Unit Size:	8.75" (222) x 12" (305) x 3" (76 mm)
Weight	8 lbs (3.6 Kg)
Display	GUI Interface via Ethernet – Web Browser via Laptop, Tablet or PDA
Operation	Push Button – Auto Locate / Pack Up Configuration Jog / Auto Locate / Program – Via Ethernet
Antenna Configurations	Sat-Lite Technologies Preconnectorized Flyaway Terminals - 3 Axis Control, Drives Azimuth, Elevation, Polarization Axes (DC Motors)
RF Input	L Band from LNB
DVB Receiver	DVB S/S2, Based on Frequency, Polarization, Symbol Rate, FEC, Modulation .
User Interface Requirements	AC Input Power (Power Cord Supplied), Ethernet (RJ 45), Rx Input from LNB Via Type N(f) (L - Band)

The Sat-Lite Technologies Flyaway Antenna Controller is a fully weatherized unit that is pre-integrated and can be quickly mounted on the Antenna. The unit comes with a GPS and Compass to provide accurate position and antenna heading information. The control unit deploys the antenna to an accurate elevation and polarization angle and sweeps in azimuth to locate a signpost satellite (with known DVB signal). The onboard DVB receiver locks on the satellite and positively identifies it. Accurate look angles can then be used to peak on the final target / desired satellite longitude.

