

3.5 Meter ESA

Like all CPI Antenna Systems Division earth station antennas, the 3.5 Meter Earth Station Antenna provides high gain and exceptional pattern characteristics.

This antenna system is designed to address the stringent requirements of both the television broadcast industry and telecommunications network operators who demand unsurpassed flexibility and electrical performance in high-quality, cost-effective, and reliable packages.

The electrical performance and exceptional versatility provides the ability to configure the antenna with your choice of linearly- or circularly- polarized 2- or 4- port combining networks. That versatility is provided at the time of initial purchase, as well as in the future, as your satellite communication requirements evolve.

This antenna system is used worldwide in broadcast applications and high density data, voice and communications networks. The CPI Antenna Systems Division 3.5 meter earth station antenna features a computer-optimized precision one-piece spun aluminum reflector with a uniquely designed dual optics Gregorian sub reflector tracking system which eliminates the need for costly jack drives and large motors while a motorized mount is also available.

This combination provides extremely accurate surface contour resulting in exceptionally high gain and closely controlled pattern characteristics. CPI Antenna Systems Division earth station antennas provide maximum durability with minimal maintenance.



Features

- 3 year warranty on all structural components
- Ka Band Capabilities
- Single Piece Main Reflector
- Bonded and riveted torsion box for rigidity
- Heavy mounting ring for strength
- Advanced dual reflector Gregorian optics
- Sub reflector closed loop positioning for precise pointing accuracy
- Compliant to ITU 580-5/465-5, FCC 25.209

3.5 Meter ESA

Design Standards

Reflector	Aluminum painted with highly diffusive white paint
Ground Mount	Hot-dipped galvanized steel, per ASTM-A123 for structural steel.
Hardware	Sizes ≤ 3/8 in (9.5mm), stainless steel, passivated per MIL-F-14072-E300 Sizes ≥ 3/8 in (9.5mm), hot-dipped galvanized stainless steel, passivated per ASTM-A123

Environmental Performances

Operating Temperature	-40° to 52°C (-40° to 125°F)
Seismic (Earthquake)	1 G Vertical and Horizontal acceleration. Equivalent to a Richter Magnitude 8.3, and Grade 11 on the modified Mercalli Scale
Operational Winds	45 mph (72 km/h) Gusts to 65 mph (105 km/h)
Survival Winds	125 mph (200 km/h) in any position of operation
Rain	4 in (102 mm) per hour
Solar Radiation	360 BTU/hr/ft ² (1135 Watts/m ²)
Relative Humidity	100%
Shock and Vibration	As encountered by commercial Air, Rail and Truck shipment.
Atmospheric Conditions	As encountered by Moderately Corrosive Coastal and Industrial Areas.

Mechanical Performances

The 3.5m Antenna mechanical general specifications and performances are listed in below table. Additional information, dimensions and layout may be provided by CPI Antenna Systems Division on a case-by-case basis.

Optics Type	Dual Reflector Gregorian
Reflector Material	Precision-Formed Aluminum
Reflector Segments	1
Mount Type	EI over Az, Tubular Mount
Antenna Pointing Range, Coarse/(Continuous)	
Elevation:	0-90° (90°)
Azimuth:	360° (±22.5° manual mount)(120° motorized mount)
Polarization	180° (180°)

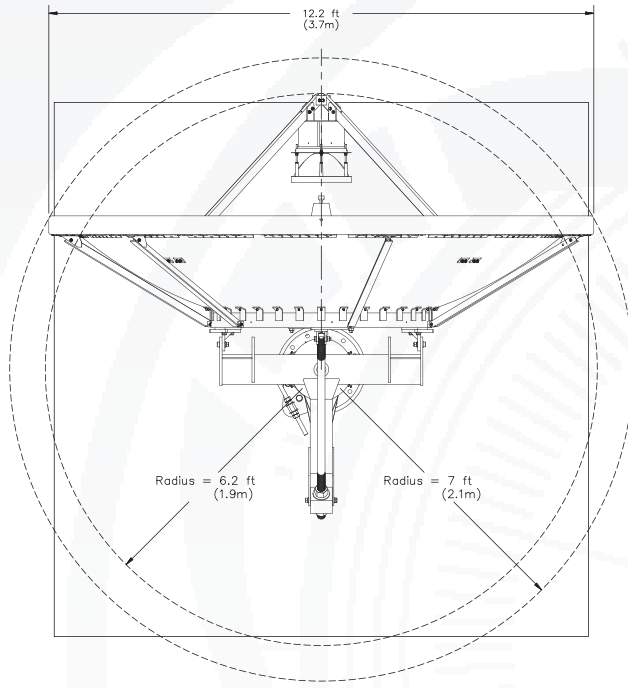
Shipping Information

Packing Options	
Standard Commercial Domestic Pack	Included
Ocean Export Pack - For non-containerized, packed for seal against salt water spray	OCEANSHIP-SML
Air Export Pack - For freighter aircraft shipments. Lower deck AirPack requires specialized bids	AIR EXPORT PACK-SML
Container Packaging	CNTPCK-SML
Required Shipping Container	
Open Top 20 ft land/sea container	Quantity 1

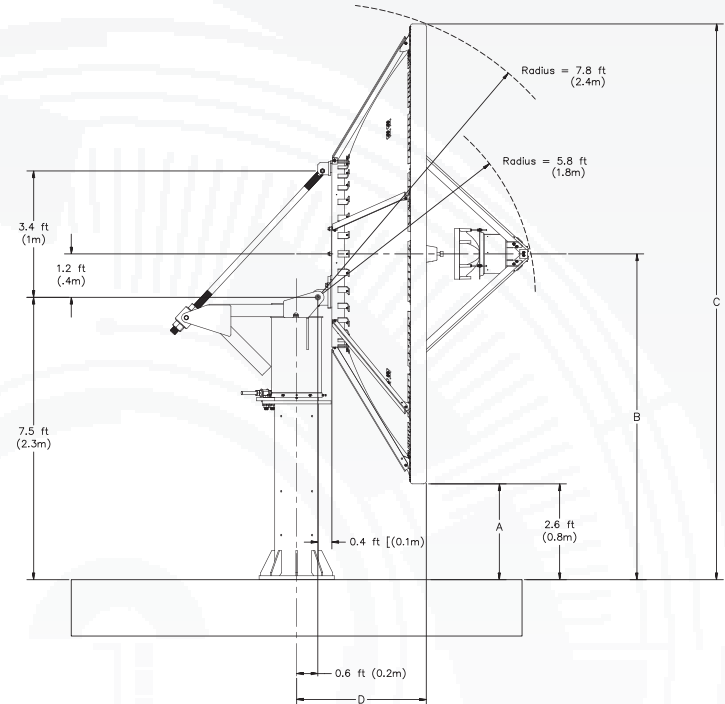
Shipping container information is given for basic configuration and may vary depending on the selected options, please contact CPI Antenna Systems Division for specific container loading plan.

3.5 Meter ESA

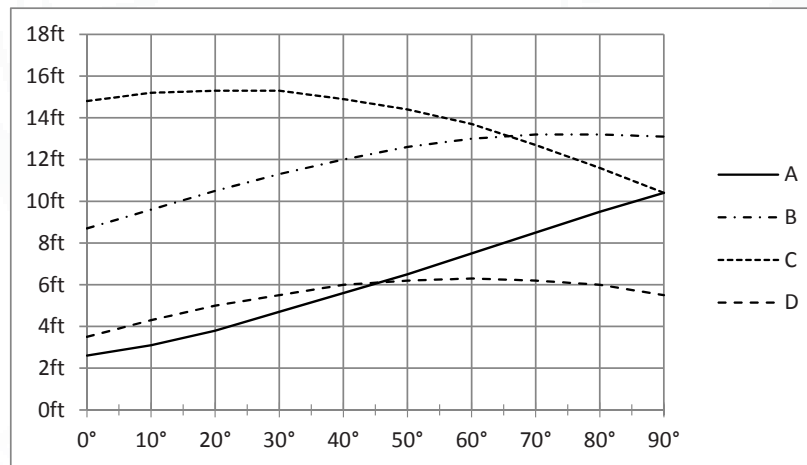
Dimensional Drawings Non Motorizable Mount



TOP VIEW



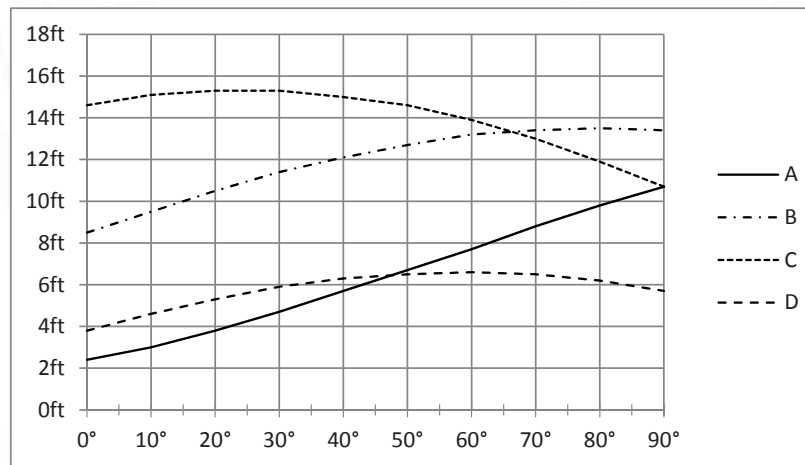
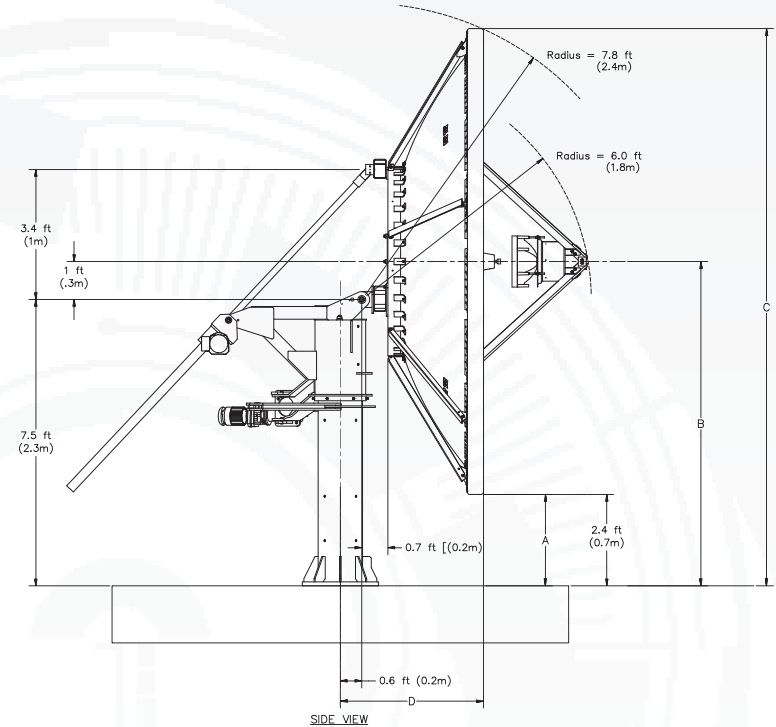
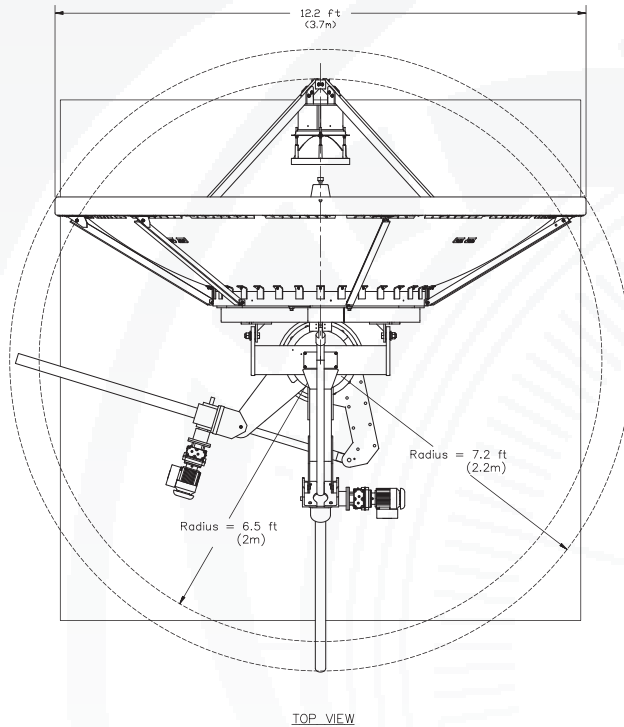
SIDE VIEW



EARTH STATION ANTENNA

3.5 Meter ESA

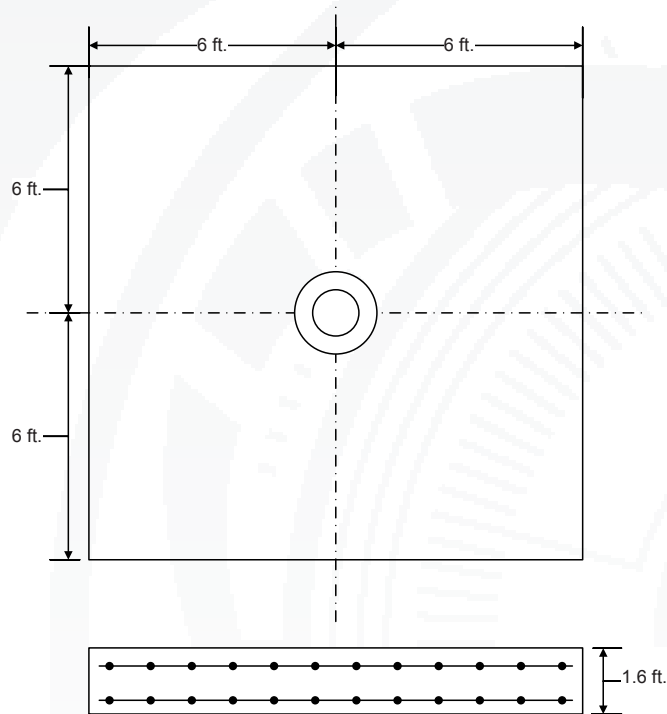
Dimensional Drawings Motorizable Mount



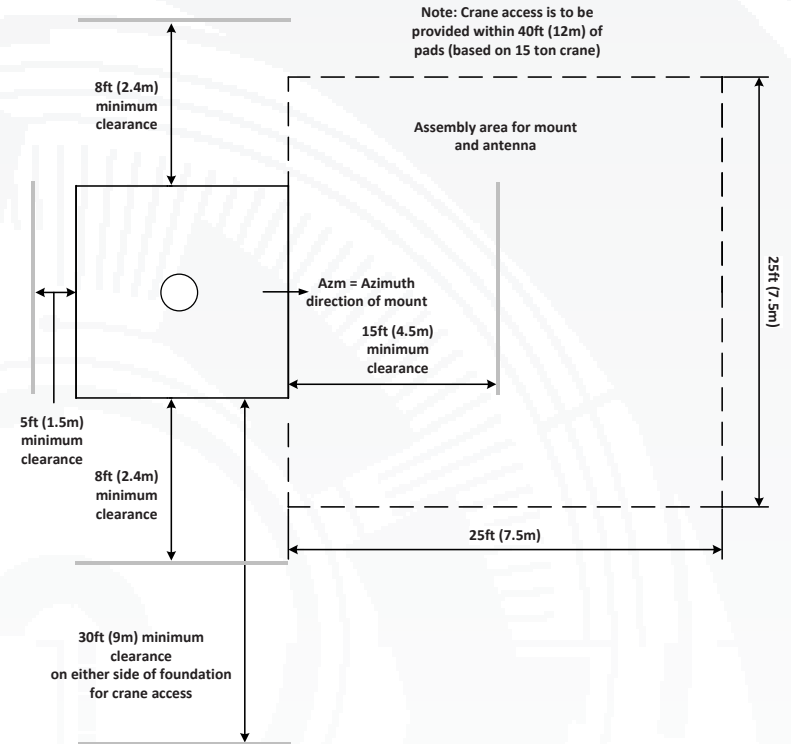
EARTH STATION ANTENNA

3.5 Meter ESA

Typical Foundation Design



Typical Foundation Information



Foundation information are provided in bulletin 237731, please contact CPI Antenna Systems Division.

Soil Bearing Capacity,	2000 lb/ft ² (9770 kg/m ²)
Reinforcing Steel,	821 Lbs (88 Kilograms)
Concrete Compressive Strength,	3000 psi (372 kg/cm ²)
Foundation Size:	(for specific standard soil and typical design)
Length	12 ft (3.65 m)
Width	12 ft (3.65 m)
Depth	1 ft 6 in (0.457 m)
Concrete Volume	8 yd ³ (6.1 m ³)

NOTE: Other typical foundation designs are available. Soil borings and foundation analysis should be performed by a qualified civil engineer.

3.5 Meter ESA

Motor Drive Speed Summary

	Variable	
Azimuth	0.5°/s	0.05°/s
Elevation	0.5°/s	0.05°/s
Polarization	1°/s	

Motorization

One motorization system is available for this antenna: the NGC tracking system that can support Steptrack, Smartrack and Ephemeris orbital tracking.

Motor Kit

Azimuth/Elevation Motor Kit	NGC-MK5
Azimuth/Elevation Motor Kit High Accuracy	NGC-MK5KA

SRT Kit

Subreflector Carriage. 2 Axis Control.	SRT-2-35
--	----------

Polarization Drive Kit (DC Step Motors)

Standard Temperature (> -20°C)	NGC-PK5DRA
--------------------------------	------------

Outdoor Unit Controller (Tracking)

Power 200 - 230 VAC, 3 Phase 50/60 Hz	NGC-ODU-208-3 (-HA)
Power 380 - 460 VAC, 3 Phase 50/60 Hz	NGC-ODU-380-3 (-HA)

Stand Alone SRT Outdoor Unit Controller

Power 100-240VAC single-phase 50/60 Hz	NGC-ODU-SRT
--	-------------

Antenna controller, motorization and options are detailed in specific bulletins, please contact CPI Antenna Systems Division..

Motorization and NGC Options

Indoor	
NGC-IDU	NGC Rack Mounted Antenna Controller W/LCD Touch Panel
NGC-001	NGC-IDU Analog Telephone Modem
NGC-002	NGC-IDU Spectrum Analyzer Card, Analog
NGC-003	NGC-IDU DVB Receiver Card
NGC-004-02	NGC IDU, L-Band Internal Beacon Receiver
NGC-006	NGC-IDU Emergency Stop Button
NGC-007	NGC-IDU 10 Mhz Reference Source
NGC-008	NGC-IDU Redundant Power Supply
NGC-009	NGC-IDU Rack Slides
NGC-101	NGC-IDU Step Tracking Software
NGC-102	NGC-IDU Smartrack Software
NGC-103	NGC-IDU Predictive Track Software
NGC-104	NGC-IDU Full Tracking Capability Software
NGC-106	NGC-IDU Remote Access Software Package
NGC-107	NGC-IDU Spectrum Analyzer Enhanced User Interface
NGC-108	Receive Pattern Test Tool
NGC-109	Redundancy Control Software
NGC-111	Sand/Dust Deviator Feature
NGC-119	NGC High Availability System Redundancy Software
Outdoor	
NGC-201	NGC ODU Low Temperature Kit (-40 C)
NGC-202	NGC ODU High Temperature Kit (+60 C)
NGC-205	NGC ODU AC Polarization Drive Interface
NGC-206	NGC Exterior Emergency Stop Button
NGC-207	Pre Movement Alert Warning Light And Annunciator
NGC-211	Dual Path NGC Redundancy
NGC-AESC	Environmental System Controller

3.5 Meter ESA

Feed Matrix

KA- BAND FEED SYSTEMS	PORT	LP	CP	RX 17.7 - 20.2 GHz	RX 18.3 - 20.2 GHz	RX 21.4 - 22.0 GHz	TX 27.0 - 30.05 GHz	TX 27.50 - 31.00 GHz	TX 28.3 - 30.0 GHz
4CPWKA-35-206	4		X		X				X
4CPWWKA-35-206	4		X	X				X	
4LPEUTKA-35	4	X				X	X		
4LPNKA-35	4	X			X		X		
4LPWWKA-35-206	4	X		X				X	

EARTH STATION ANTENNA

3.5 Meter ESA

Antenna Configurations

Ka Band Earth Station Antennas	
Manual Tubular Mount.	ES35-1
Manual Tubular Mount, Integral De-Ice Pads 208VAC	ES35-1-208
Manual Tubular Mount, Integral De-Ice Pads 380VAC	ES35-1-380
Motorizable Tubular Mount with Az/EI Jackscrews.	ES35MPJ-1
Motorizable Tubular Mount with Az/EI Jackscrews, Integral De-Ice Pads 208VAC	ES35MPJ-1-208
Motorizable Tubular Mount with Az/EI Jackscrews, Integral De-Ice Pads 380VAC	ES35MPJ-1-380

Antenna Options and Spares

Anchor Bolt and Template Kits Option	
302689	Anchor Bolt and Template Kits
Heating Options	
FAD35	Anti-Dew Kit
FH35	Feed Heater Ka-Band
RMHC35	Remote Heater Controller
Environmental Systems Options	
PDCPKA-35-208	Precipitation Deviator Ka-band 208 VAC, 3 Phase
PDCPKA-35-380	Precipitation Deviator Ka-band 380 VAC, 3 Phase
Safety Options	
ANTGND-5	Foundation Installed Grounding Kit
LRK5	Lightning Rod Kit
OBWRNLT-UNV	Obstruction Warning Light Kit
Other Options	
221196	Handwheel Kit (2 required)
209906	Lubrication and Maintenance Kit
ANGVERN-49	Angle Vernier Kit
FTST	Feed System Testing
TK-MAN-SML	Tool Kit, Small Manual Antennas
TK-MOT-SML	Tool Kit, Small Motorized Antennas

EARTH STATION ANTENNA



CPI Antenna Systems Division
 1120 Jupiter Road, Suite 102
 Plano Texas 75074
 USA
 Phone: +1-214-291-7654
 Fax: +1-214-291-7655
www.cpii.com/ascsignal
ASC.Sales@cpii.com

